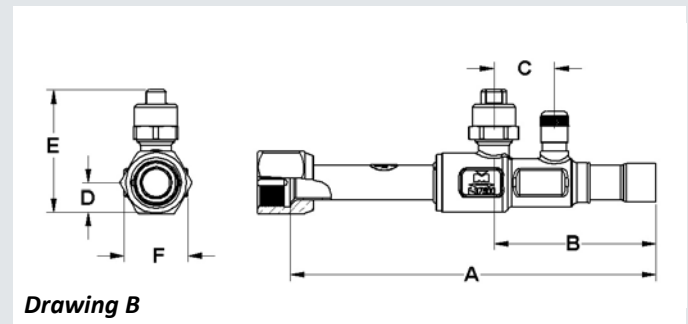
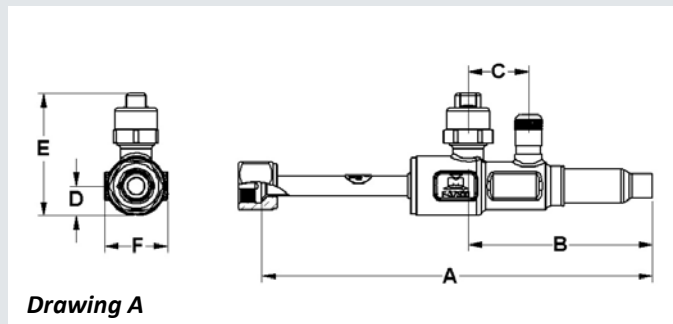


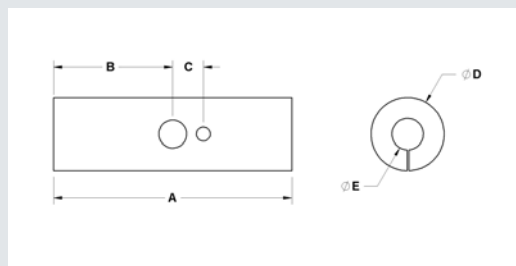


Features:

- Design Pressure (DP) / Maximum abnormal pressure (MAP): 775 psig, 53 bar
- Continuous operating temperature (COT): -40°F/300°F, -40°C/149°C
- Contact factory or visit website for compatibility with CFC, HCFC, HFC and HFO refrigerants and oils
- Full port construction to match line size ID
- Internally equalized ball design
- Rupture-proof encapsulated stem
- MCM Seal Technology
- UL/cUL Listed, Conforms to Pressure Equipment Directive 2014/68/EU, CRN OC1241.9C



| Valve Part Number | Valve Insulation Kit Part Number | Size | | A | | B | | C | | D | | E | | F | | Wt | | Drawing |
|-------------------|----------------------------------|------|----|------|-----|------|----|------|----|------|----|------|----|------|----|------|------|---------|
| | | in | mm | in | mm | in | mm | in | mm | in | mm | in | mm | in | mm | lb | kg | |
| A 18941 | A 18611U | 1/4 | 6 | 7.17 | 182 | 3.36 | 85 | 1.10 | 28 | 0.54 | 14 | 2.23 | 57 | 1.16 | 29 | 0.64 | 0.29 | A |
| A 18942 | A 18612U | 3/8 | 10 | 7.12 | 181 | 3.36 | 85 | 1.10 | 28 | 0.54 | 14 | 2.23 | 57 | 1.16 | 29 | 0.70 | 0.32 | A |
| A 18943 | A 18613U | 1/2 | 13 | 6.71 | 170 | 2.94 | 75 | 1.10 | 28 | 0.54 | 14 | 2.23 | 57 | 1.16 | 29 | 0.73 | 0.33 | A |
| A 18944 | A 18614U | 5/8 | 17 | 6.64 | 169 | 2.94 | 75 | 1.10 | 28 | 0.54 | 14 | 2.23 | 57 | 1.16 | 29 | 0.79 | 0.36 | B |



| Insulation Part No. | A (in) | B (in) | C (in) | D (in) | E (in) | Thickness (in) | Wt(lb) |
|---------------------|--------|--------|--------|--------|--------|----------------|--------|
| MSBVINSCEN | 8.56 | 4.28 | 1.10 | 2.63 | 1.13 | 0.75 | 0.02 |